



GAS DETECTION SYSTEM BUTOUCH

PART.NO. 1220001-1220005

SYSTEM BUTOUCH

GENERAL DESCRIPTION

- Standard 8, 16, 32, 64 or 128 sensor inputs
- HDMI Colour TFT touch-screen
- PLC control system
- Wall Mounting
- Custom configured I/O's options
- Compatible with Consilium gas sensors

The **BUTOUCH** is a series of Touch Screen plc controlled gas detection systems. As standard it's available in 8 or 16 channels. However, in addition we also supply custom made versions to your specific requirements. For example additional input channels (up to 128), outputs, interfaces, multiple control screens, etc.. Wall mounting cabinets can be delivered in Power Coated Steel or Stainless Steel with a lockable door containing the built-in 9,7" TFT HMI touchscreen.

With the **BUTOUCH** screen concept you have a number of multiple views available:

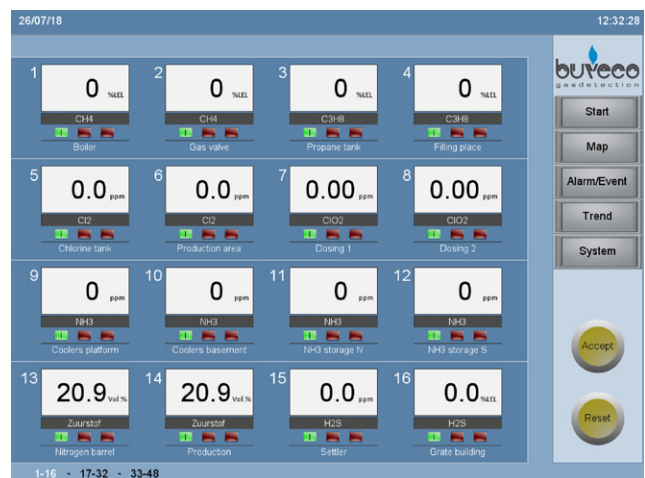
- START** Displays the current measured values including various status and alarm messages per sensor.
- MAP VIEW** Displays a map showing the actual sensor locations or detection zones. If an alarm occurs then this will be visually displayed on the map view. Note: This function is optional.
- ALARM/EVENT** The alarm and event view displays the current and historical events / events, incl. date and time format.
- HISTORY** In the history view detailed sensor information can be requested per sensor. This includes the possibility to graphically display
- SYSTEM** To change various settings related to the system. You can also log in to enter the service level mode.

APPLICATIONS:

- + Chemical industry
- + Refineries
- + Waste water treatment
- + Laboratory / Universities
- + Storage dangerous goods
- + Food industry

WE OFFER MORE THAN A PRODUCT!

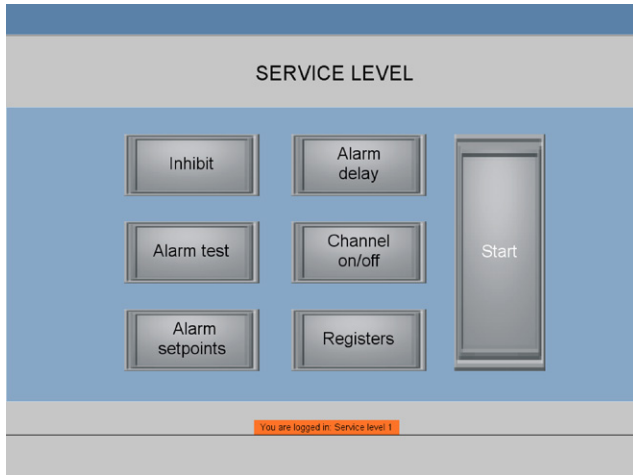
- + Tailor made advice
- + Project management
- + Technical support
- + Training and education
- + Commissioning
- + Onsite service / maintenance / calibration
- + Rentals



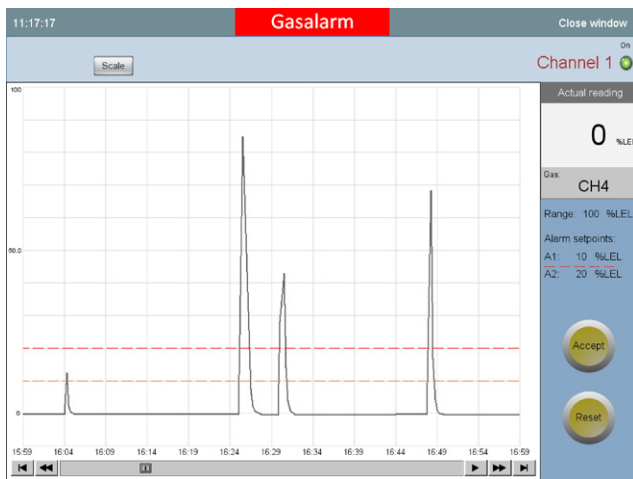
Start screen with an overview of the sensors and Event log with alarms, actuals (red) faults, historical their names (incl. locations, tag numbers, etc.)

The specifications described herein are subject to change without notice.

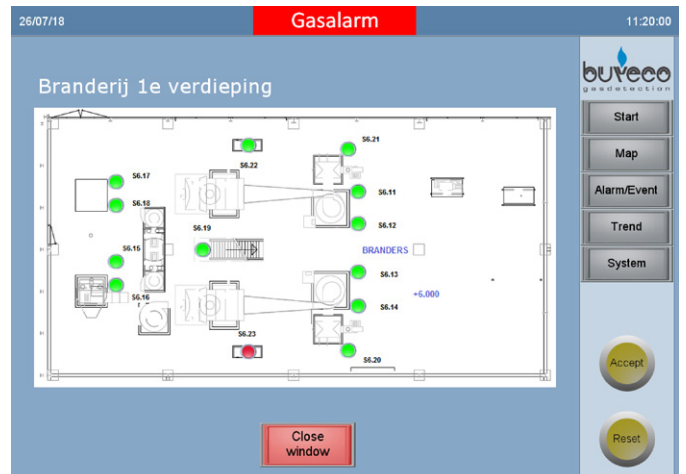
AVAILABLE SCREENS (EXAMPLES)



Event log with alarms, actuals (red), faults (green) incl. date and time












Graphical alarm measurement per sensor



Map with sensors and zones

ORDERING INFORMATION

ACCESSORIES			
TYPE	IMAGE	PART NO.	DESCRIPTION
SVA, Alarm messenger		4000195	Alarm messenger (SMS / Email)
Signal tower		4000177	Multi colour LED signal tower with 3 colours (green, orange & red), incl. buzzer (230VAC)
		4000200	Multi colour LED signal tower with 3 colours (green, orange & red), incl. buzzer (24VDC)
Sounder + Beacon		4000188	Combined sounder (110dB) and beacon (Red flash light) 230VAC
		4000189	Combined sounder (110dB) and beacon (Red flash light) 24VDC
Beacon		4000196	Beacon (Red flash light) 230VAC
Signal tower "FlatSign"		4000204	Multi colour signal tower with 3 colours (green, orange & red), incl. buzzer (230VAC)
Text sign		4000184	Text sign "GASALARM – LEAVE AREA"
		4000185e	Text sign "GASALARM – DO NOT ENTER"
EMC Cable gland		4002416	PG11 for entry of sensor cable
		4002402	PG13,5 for entry of sensor cable
EMC Cable nut		4002415	PG11 in combination with 4002416
		4002417	PG13,5 in combination with 4002402

GAS DETECTION SYSTEM		
VERSION	PART.NO	DESCRIPTION
BuTouch 8	I220001	Gas Detection system, 8 sensors inputs, power coated steel
BuTouch 8 Stainless Steel	I220011	Gas Detection system, 8 sensor inputs, stainless steel
BuTouch 16	I220002	Gas Detection system, 16 sensor inputs, powder coated steel
BuTouch 16 Stainless Steel	I220012	Gas Detection system, 16 sensor inputs, stainless steel
BuTouch XL	I220005	Gas Detection system, custom made (up to 128 channels)

SPECIFICATIONS

PRODUCT	BUTOUCH
Dimensions	BUTOUCH 8: 700 x 500 x 250 mm (H x W x D) BUTOUCH 16: 700 x 500 x 250 mm (H x W x D) BUTOUCH XL: depending on configuration
Weight	BUTOUCH 8: 20 kg BUTOUCH 16: 25 kg BUTOUCH XL: depending on configuration
Channels (inputs)	BUTOUCH 8: Up to 8 channels (sensors) BUTOUCH 16: Up to 16 channels (sensors) BUTOUCH XL: Depending on configuration
Housing	Powder coated steel or Stainless Steel (see ordering options)
Measure principle	4-20 mA input (sensor)
Measuring units	%LEL, ppb, ppm, Vol.%
Operating Temperature	-10°C to +60°C
Analogue inputs	BUTOUCH 8: 8 pcs 4-20 mA BUTOUCH 16: 16 pcs 4-20 mA BUTOUCH XL: Depending on configuration
Digital inputs	4 pcs (standard)(BUTOUCH XL: depending on configuration)
Digital outputs	BUTOUCH 8: 10 pcs programmable, voltage free or 24VDC/230VAC BUTOUCH 16: 16 pcs programmable, voltage free or 24VDC/230VAC BUTOUCH XL: Depending on configuration
Serial outputs	Ethernet, MODBUS TCP
Data storage	Standard in the HMI memory (128MB) (Optional FLASH memory)
Full data logger	Log interval measurements 10 sec. log capacity ~ 2-4 days (to be expanded with a optional FLASH memory)
Event logger	Multiple events, max. 90 days
Custom made outputs	Optional, on request
Alarm identification	Visual per sensor on the screen (A1, A2, SF)
Display	HMI colour 9.7" TFT touchscreen
Power supply	230VAC 50 to 60 Hz
Power consumption	BUTOUCH 8: 120W BUTOUCH 16: 120W BUTOUCH XL: depending on configuration
Cable requirements	See sensor specification
Features	<ul style="list-style-type: none"> - Connection of Multiple screens (HMI). For example entree, Office, Control Room, Workshop, etc.. - Remote access with VNC viewer; internet / intranet - Multiple user levels (user; super user; engineer; etc.) - User friendly Touch Screen control and read out - The system is "field ready" delivered incl. standard functionality, software, cable glands and set of standard drawings
Manufacturer	Buveco Gasdetection BV, a Consilium Group Company